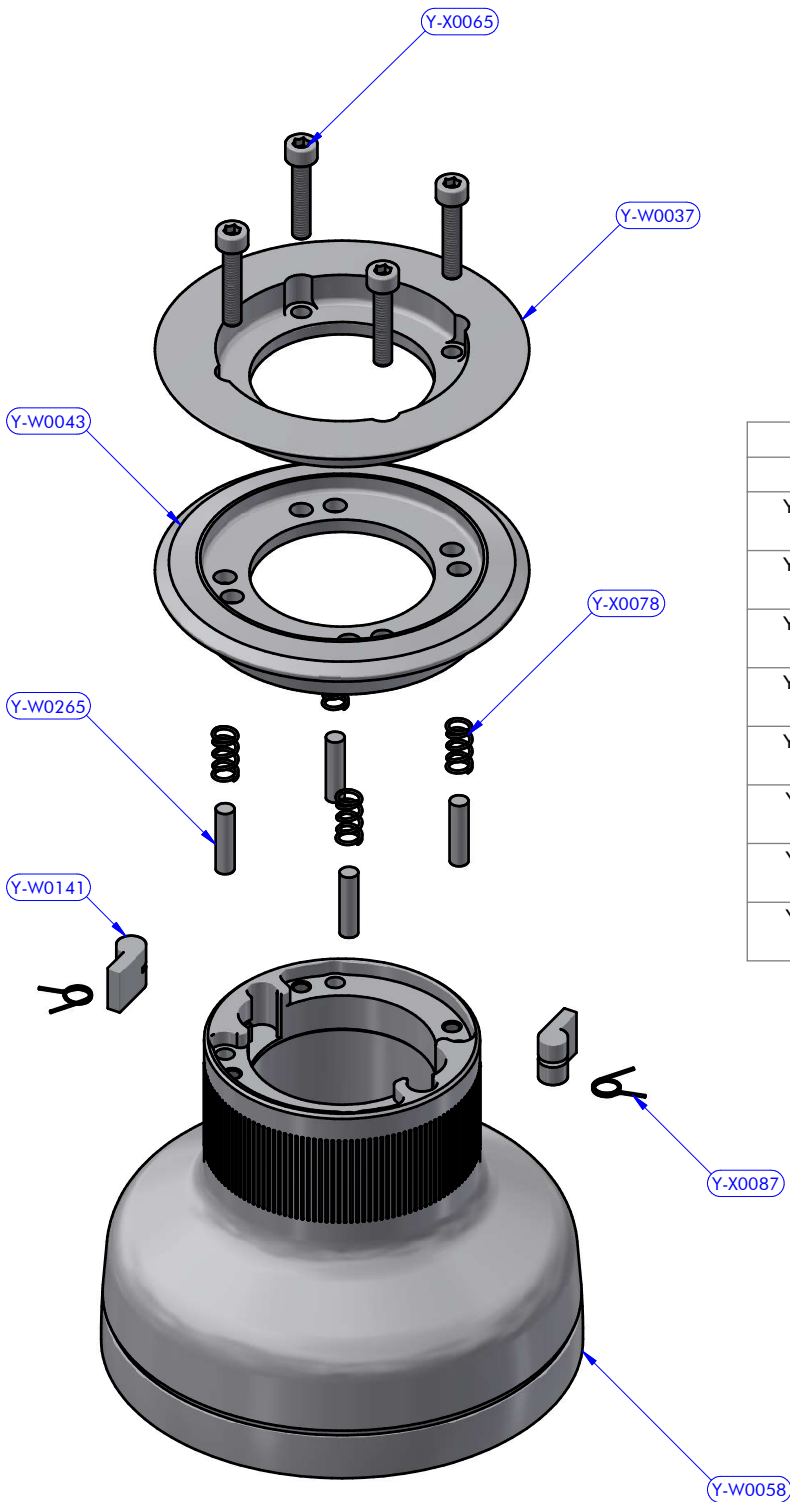
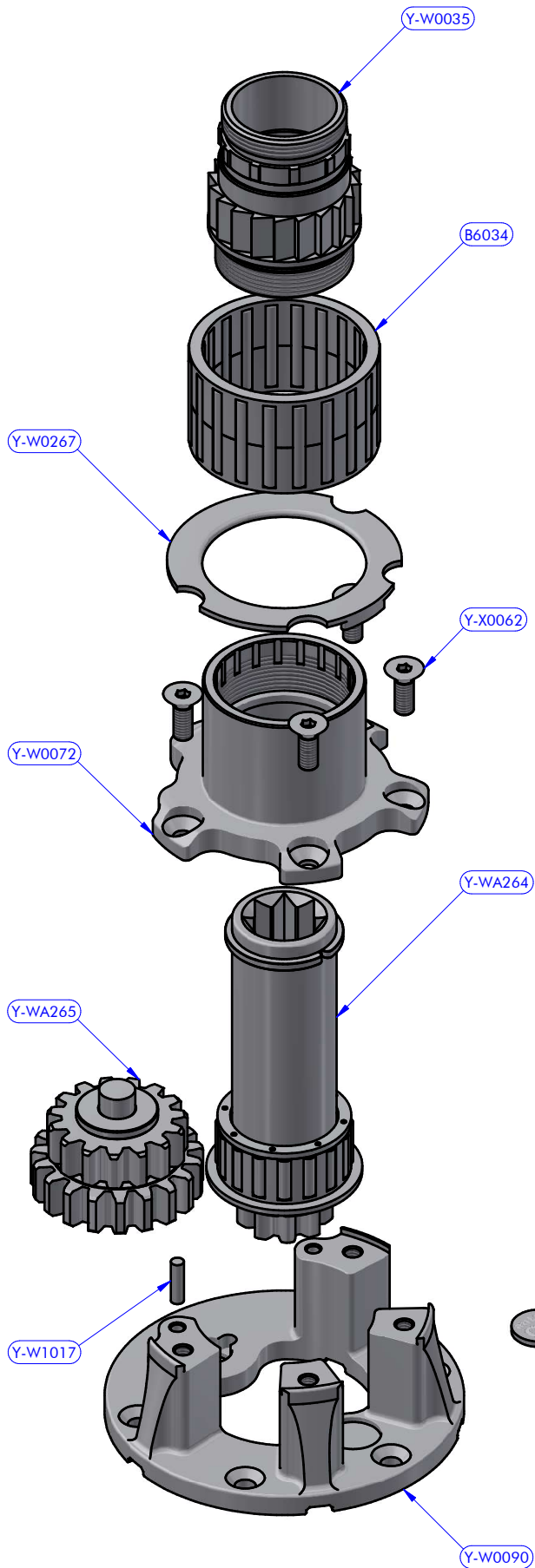


PART LIST			
CODE	DESCRIPTION	MATERIAL	Q.TY
Y-W0001	Upper cap	S.Steel	1
Y-W0004	Upper cap	Plastic	1
Y-W0013	Stripper	Plastic	1
Y-W0143	ST plug	Plastic	3
Y-W0264	Pipe spacer	Resin	1
Y-W0720	Opening tool	S.Steel	1
Y-W0918	Upper disk	Aluminium	1
Y-W1062	Self-tailing arm	Aluminium	1
Y-WA266	Drum	Various	1
Y-WA267	Base + Gears assy	Various	1
Y-X0137	Screw	S.Steel	1



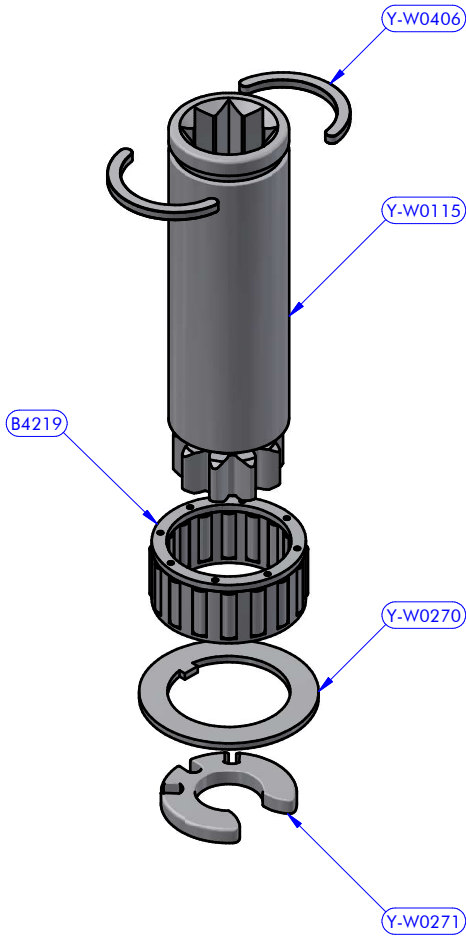
Y-WA266
Drum XT30 AL/R + ST Disks

PART LIST			
CODE	DESCRIPTION	MATERIAL	Q.TY
Y-W0037	Foot control corps	Aluminium	1
Y-W0043	ST lower disk	Aluminium	1
Y-W0058	Drum	Aluminium	1
Y-W0141	Pawl	S.Steel	2
Y-W0265	Cylinder pin	S.Steel	4
Y-X0065	Screw	S.Steel	4
Y-X0078	Compression spring	S.Steel	4
Y-X0087	Torsion spring	S.Steel	2



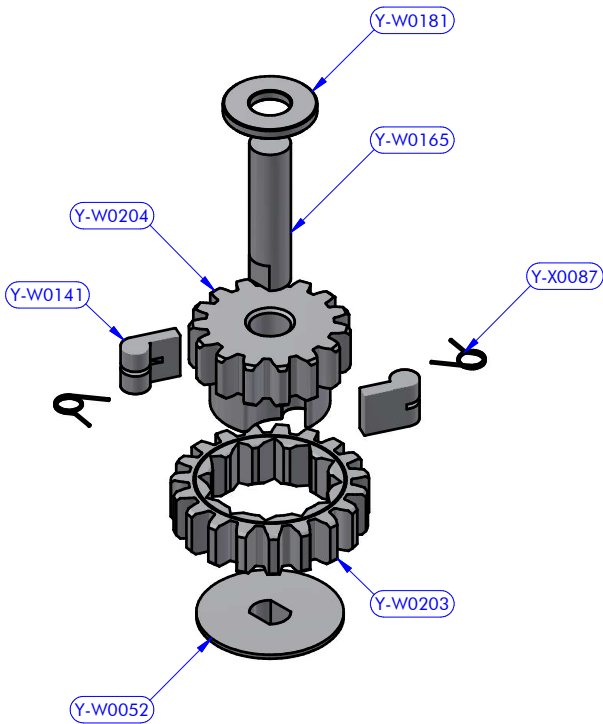
Y-WA267
Base + Gears assy XT30

PART LIST			
CODE	DESCRIPTION	MATERIAL	Q.TY
B6034	Roller bearing	Plastic / S.Steel	1
Y-W0035	Stem extension	Chromed brass	1
Y-W0072	Stem	Chromed brass	1
Y-W0090	Base	Aluminium	1
Y-W0154	I.D. tag	Aluminium	1
Y-W0267	Drum washer	Plastic	1
Y-W1017	Cylinder pin	S.Steel	2
Y-WA264	Main shaft assy	Various	1
Y-WA265	Gears kit	Various	1
Y-X0062	Screw	S.Steel	4



Y-WA264
Main shaft assy XT30

PART LIST			
CODE	DESCRIPTION	MATERIAL	Q.TY
B4219	Roller bearing	Plastic / S.Steel	1
Y-W0115	Main shaft	S.Steel	1
Y-W0270	Special washer	S.Steel	1
Y-W0271	Sector	Plastic	1
Y-W0406	Half-ring	Brass	2



Y-WA265
Gears kit XT30/30.2 Axis "B"

PART LIST			
CODE	DESCRIPTION	MATERIAL	Q.TY
Y-W0052	Gear lower washer	Plastic	1
Y-W0141	Pawl	S.Steel	2
Y-W0165	Gear axis	S.Steel	1
Y-W0181	Pipe spacer	Plastic	1
Y-W0203	Gear "B1"	Bronze	1
Y-W0204	Gear "B2"	Bronze	1
Y-X0087	Torsion spring	S.Steel	2